



Quick Start Guide Vodafone Mobile Broadband USB Stick

Designed
for Vodafone





Welcome

to the world of mobile communications

- 1 Welcome
- 2 Set up your USB Stick
- 3 Start the software
- 4 Software overview (Microsoft Windows)
- 5 Connect (Microsoft Windows)
- 6 SMS text messaging (Microsoft Windows)
- 8 SMS contacts (Microsoft Windows)
- 9 Software overview (Mac OS X)
- 10 Connect (Mac OS X)
- 11 SMS text messaging (Mac OS X)
- 13 USB Stick LED lights
- 13 Signal strength
- 14 Hints and tips
- 16 Glossary

Welcome

Your new **Vodafone Mobile Broadband USB Stick** lets you connect your computer to the internet over the Vodafone high-speed mobile phone network*.

Browse the web

You can now access the **web** and any other internet service wherever there's a mobile phone network.

Pick up emails

Keep up to date with your **emails**, wherever you are. You can also access your personal email accounts – even web-based accounts like Hotmail.

Send and receive SMS text messages

You can send and receive **SMS text messages** straight from your computer. Vodafone SMS provides an easy way to view messages, write new ones, and manage contact details.

System Requirements

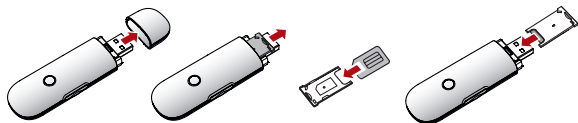
To use this USB Stick and the Vodafone Mobile Broadband software, you need:

- A computer running Microsoft® Windows Vista™ (SP1 recommended), Windows® XP SP2 (SP3 recommended), or an Apple Mac running Mac OS® X 10.4.11 or above
- At least 100 MB free disk space and 256 MB RAM
- A USB socket
- Administrator rights on your computer.

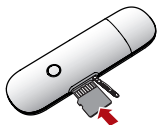
* Vodafone Mobile Broadband is available in the 3G Mobile Broadband Zone and is subject to network limitations and availability. See vodafone.com.au/coverage for details.

Set up your USB Stick

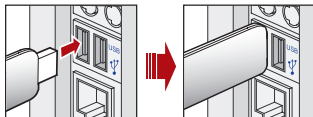
- Remove the cap from the end of the USB Stick. Slide out the SIM holder from its slot, and insert your SIM as shown.



- If you are using a MicroSD memory card with your Stick (to allow your Stick to behave as a flash memory drive), insert the card as shown.



- Plug the USB Stick firmly into your computer's USB port.



Start the software



On Microsoft Windows computers

The first time you plug your USB Stick into a PC the software setup should start automatically, and proceed to set up your USB Stick. If for some reason the setup does not start, right click on the VMC Lite 9.x.x.x drive in 'My Computer' (Start Menu, Computer for Vista machines), select Explore and double-click the file called **setup_vmc_lite.exe** on the USB Stick. Follow the on-screen instructions.

Setting up your USB Stick may take a few minutes, but once the setup is finished, the Vodafone Mobile Connect Lite software should start automatically. If for some reason the program does not start, select **Vodafone Mobile Connect** on the Desktop or from the Windows Start menu.

On Mac OS X computers

The first time you plug in your USB Stick, it will show up on your desktop like a standard CD. From the Vodafone Mobile Broadband window, double-click the file called **Vodafone Mobile Broadband**, and follow the on-screen instructions.

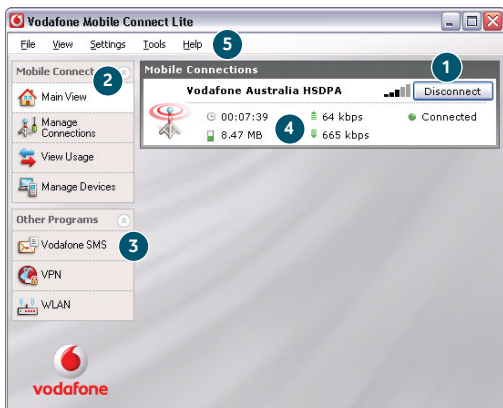
Once your Mac has restarted, the CD will no longer appear, but the Vodafone Mobile Broadband software should start automatically. If for some reason the program does not start, select the Vodafone Mobile Broadband software in your Applications folder.

Software overview (Microsoft Windows)



- 1 Connect/Disconnect**
Connect via the mobile phone network
- 2 Views**
View data usage, and additional software settings
- 3 Start SMS program**
Send, receive and manage SMS messages and contacts
- 4 Status**
Check the status of your connection
- 5 Help**
Help Topics, plus internet and hotline support.

The first time you run the software, your USB Stick will usually be set as the default device. If it is not, click 'Manage Devices' and select your USB Stick there.



Connect (Microsoft Windows)



The radio waves on the Mobile Connections icon are animated whenever data is being transferred over the connection.

No radio waves are shown when nothing is being transferred.

The radio waves are shown static when no connection is open.

If a mobile network has been found, the **Connect** button in the **Mobile Connections** panel will be enabled. Clicking Connect connects to the internet across the mobile phone network. Now you can browse the web or use email.

When connected, the Connect button text changes to **Disconnect** and a green 'Connected' indicator appears below the button.



Clicking the Disconnect button will close the connection – and the text on the button will revert to Connect.

To open a mobile connection, you need to be within coverage of a mobile network. As a rule, anywhere you can make a call on your mobile phone, you should be able to connect.

SMS text messaging (Microsoft Windows)



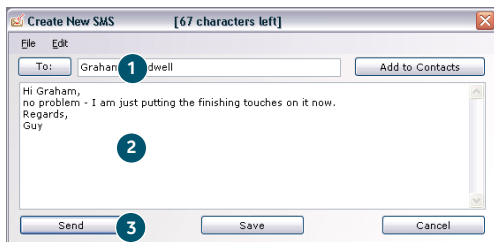
Click **Vodafone SMS** on the navigation bar in the main window of the Vodafone Mobile Connect Lite software to open the SMS program.

To send an SMS

Click **New** at the left-hand end of the SMS toolbar to create a new SMS text message.

- 1 Address**
Enter the recipients here, or choose them from Contacts
- 2 Message**
Write your message here
- 3 Send**
Click on the **Send** button to send your message.

The number displayed to the person who receives your message will be from your data SIM, not your mobile phone. Use a short 'signature' to make sure people know you sent them a message: Settings/Messages/Signature.



After your SMS has been sent, it will be stored in the **Sent** list.



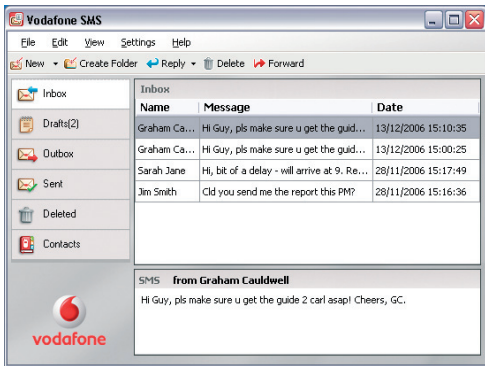
Receiving SMS

When you receive a new message, an **SMS Notification** is shown briefly so you can respond to it directly.



The received message can also be read from the **Inbox** in the main Vodafone SMS window.

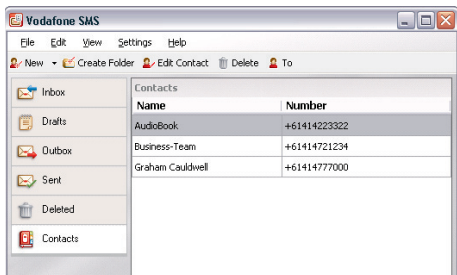
The Vodafone SMS software will receive text messages whenever you have mobile network coverage.



SMS contacts (Microsoft Windows)



Click **Contacts** on the SMS navigation bar to open the Contacts list, in which you can save SMS numbers that you use frequently as contacts with names.



New SMS Contact

Clicking the **New** button on the SMS toolbar opens a new contact window.

Enter the name and number of your contact using the international format for the number, eg. +61414123123.

A screenshot of the 'Create New Contact' dialog box. The dialog has a title bar with the text 'Create New Contact' and a close button. Inside the dialog, there are two labels: 'Name:' and 'Number:'. Below 'Name:' is a text input field containing 'John Smith'. Below 'Number:' is a text input field containing '+61414'. At the bottom of the dialog, there are two buttons: 'OK' and 'Cancel'.

Software overview (Mac OS X)

- 1 Connect/Disconnect**
Connect via the mobile phone network
- 2 Views**
View connections, data usage and devices
- 3 Start SMS Program**
Send, receive and manage SMS messages and contacts
- 4 Status**
Check the status of your connection

Vodafone Mobile Broadband

Main Connections Usage Devices

2

LAN Connection Not connected

Mobile Connection Connected

Vodafone Australia HSUPA **4**

00 | 06 | 07
hrs mins secs

76.8 kbps

28.2 MB

4.5 Mbps

1 Disconnect

AirPort Connection Not connected

"AirPort switched off"

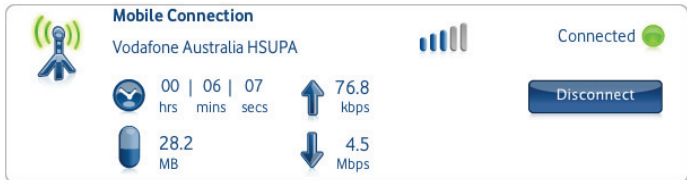
vodafone

3

Connect (Mac OS X)

If a mobile network has been found, the **Connect** button in the **Mobile Connection** panel will be enabled. Clicking Connect connects to the internet across the mobile phone network. Now you can browse the web or use email.

When connected, the Connect button text changes to **Disconnect** and a green 'Connected' indicator appears above the button.



Clicking the Disconnect button will close the connection – and the text on the button will revert to Connect.

To open a mobile connection, you need to be within coverage of a mobile network. As a rule, anywhere you can make a call on your phone, you should be able to connect.

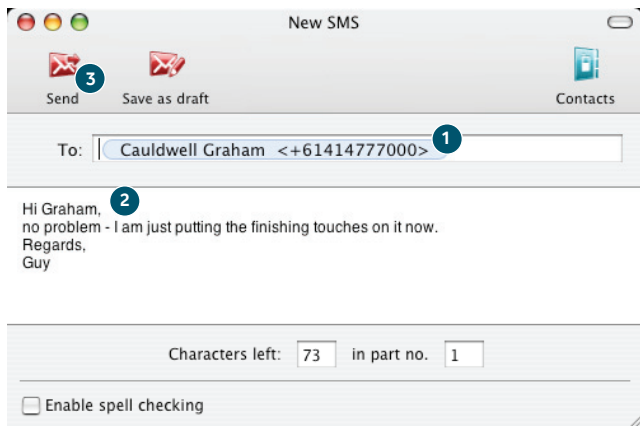
SMS text messaging (Mac OS X)

Click on the envelope symbol in the lower left corner in the main window of the Vodafone Mobile Broadband software to open the SMS program.

To send an SMS

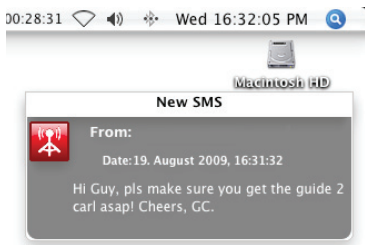
Click **New SMS** at the left-hand end of the SMS toolbar to create a new SMS text message.

- 1 Address**
Enter the recipients here, or choose them from your Address Book.
- 2 Message**
Write your message here.
- 3 Send**
Click on the **Send** button to send your message.

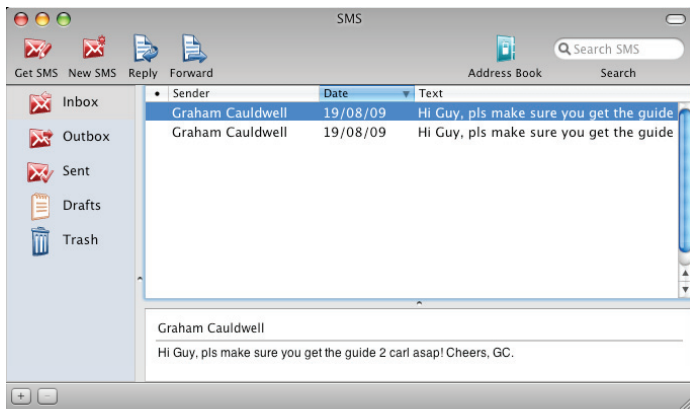


Receiving SMS

When you receive a new message, an **SMS Notification** is shown briefly.



The received message can also be read from the **Inbox** in the main Vodafone SMS window.



USB Stick LED lights

The LED light on your USB Stick shows which kind of mobile network has been found, and whether the USB Stick is connected to that network.

- Green blinking**
A GPRS network has been found – you could connect
- Green solid**
Connected via GPRS
- Blue blinking**
A 3G network has been found – you could connect
- Blue solid**
Connected via 3G
- Light blue solid**
Connected via Mobile Broadband.

Signal strength



On Microsoft Windows computers

The strength of the mobile network signal is shown by the symbol to the left of the Connect button, and by the icon in the Windows Notification area.

The more bars that are filled in, the better the mobile network signal quality. At least one bar must be filled in order to connect.



On Mac OS X computers

The strength of the mobile network signal is shown by the symbol to the left of the Connect button.

Hints and tips

If you don't see your USB Stick in the list of devices

- Remove the USB Stick
- Re-start your computer
- Re-insert the USB Stick.

If no network can be found

- Change your physical location: in a building, move closer to a window, move higher up, or go outside
- (Windows) Select 'View/View Available Mobile Connections' and see if you can connect to a particular network in the list shown
- Contact Support, and check that data services and roaming are enabled on your account.

If no connection can be opened

- Wait a few minutes and try to connect again. This is most often a temporary problem, especially if an 'Error 631' or 'Error 619' is referenced. If it persists please call Vodafone Support on the number on the next page
- Select 'File/Exit' to exit the Vodafone Mobile Connect Lite software completely, and then re-start it again
- Re-start your computer
- (Windows) Click 'Manage Devices', select your device, click edit and then select a different network preference on the Network Preference tab page, eg. '3G Only'
- (Mac) Click 'Devices', select your device and select a different network preference from the drop down menu, eg. '3G Only'
- If you are using a VPN (Virtual Private Network), contact your company IT administrator.

If you have problems when roaming

- (Windows) Select 'View/Available Mobile Connections' and try opening one of the connections shown
- Contact Support, and check roaming is enabled for your account

- Check the name of the current network in the Mobile Connections panel. If it is not Vodafone or a Partner, select a different network from 'View/Available Mobile Connections'.

If the connection keeps switching between GPRS and 3G

- (Windows) Click 'Manage Devices', select your device, click edit and then select a different network preference on the Network Preference tab page, eg. '3G Only'
- (Mac) Click 'Devices', select your device and select a different network preference from the drop down menu, eg. '3G Only'
- Switch back to your normal preference when you move locations.

If you are using a Windows machine and VMCLite does not install and/or the install progress bar keeps looping, this can indicate a failure with Windows detecting the device components

- Go to Device Manager (normally located under Control Panel and System headings. Refer to Windows Help and Support for further information on how to access Device Manager)
- Expand the 'Universal Serial Bus Controllers' heading
- Right click the 'USB Mass Storage Device' and select 'Uninstall'
- Once done if the devices do not automatically reload go to 'Action' and 'Scan for Hardware changes'
- If this still does not resolve please contact Vodafone Support.

Check software update preferences

- Set your operating system and other programs to notify you of software updates instead of downloading them automatically—otherwise they may slow down your mobile connection, or exceed your data usage limit.

Usage indication

- The usage window only displays an approximate indication of your data usage. Please refer to your invoice for the actual amount of data transferred. **You can check your data usage anytime. If you're a Contract customer visit myvodafone.com.au or send a free blank TXT to 1512 from the Vodafone Mobile Connect software. If you're a Prepaid customer visit broadband.vodafone.com.au/manage.**

For further help, please visit vodafone.com.au/mobilebroadband, or call Vodafone Customer Care. If you're a Contract customer call **1555** from a Vodafone mobile or **1300 650 410** from any other phone and say 'data services'. If you're a Prepaid customer, call **126722** from a Vodafone mobile or **1300 500 222** from any other phone.

Glossary

Built-in data card	Mobile data card built into notebook computer. Enables data connections over the mobile phone network.
Data card/USB stick	A device for a computer that is used to open a data connection over the mobile phone network.
EDGE	An enhancement to GPRS networks offering higher speeds, although not as fast as those provided by 3G, or Mobile Broadband.
EV-DO	A high-speed mobile data standard used mostly in the USA. Frequent travellers to the USA should contact their mobile network operator about using special Vodafone Mobile Connect data devices and software in the USA.
GPRS	Standard for transferring data over mobile phone (GSM) networks. It generally provides wide coverage and moderate data speeds. (General Packet Radio System).
GSM	A standard for mobile telecommunications (Global System for Mobile communications), supported by over 680 operators in 210 countries and territories.
3G	Often referred to as the 3rd Generation of GSM technologies, UMTS (Universal Mobile Telecommunications System) provides higher data speeds.
Mobile Broadband (HSPA)	An evolution of 3G to provide faster data speeds. Like many fixed-line 'broadband' services, Mobile Broadband provides a faster download speed than upload speed.
Roaming	Connecting via networks other than your own operator's network. This typically occurs when you are abroad, but is also possible in your own country.
SIM	The 'Subscriber Identity Module' is the small, postage-stamp-sized chip that you will have received together with your mobile subscriber contract. The SIM has gold contacts on one side.

The term Mobile Broadband together with the 'birds' design is a trademark of GSMC Limited.



Support

The latest setup guides, FAQs, troubleshooting tips and software downloads are just a click away at vodafone.com.au/mobilebroadband

If you're having problems and need some help, visit vodafone.com.au/help or call us. If you're a Contract customer call 1555 from a Vodafone mobile or 1300 650 410 from any other phone and say 'data services'. If you're a Prepaid customer, call 126722 from a Vodafone mobile or 1300 500 222 from any other phone.

© Vodafone 2009. Vodafone and the Vodafone logos are trade marks of the Vodafone Group. Any product or company names mentioned herein may be the trade marks of their respective owners.

Product Code:
K3765 VMCLite 9.4 05/09_en_AU